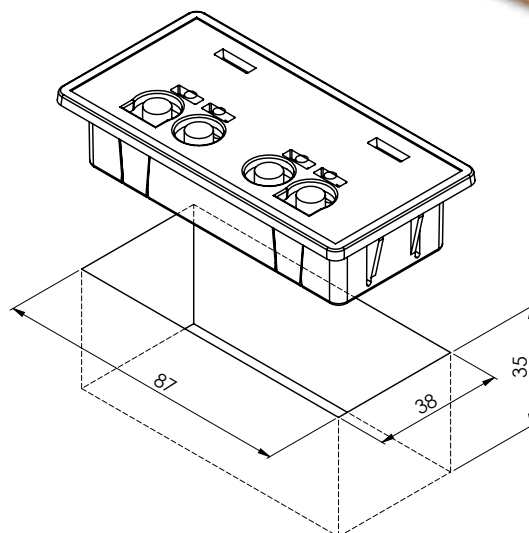


Roof Hatches



CONTROL UNIT

EMC APPROVED



colour

REMARKS

- Homologated according EC 2004/104
- The unit 30-6000 can control one or two electrical operated roof hatches
- To open/close front and backside of the roofhatch
- The position of the dome can be seen on the display (green Led's)
- The unit closes automatically when the ignition key is turned off
- Even when the ignition key is off, the hatch can be opened for ventilation
- The panel display has a current save function, reacting to usage
- Illumination with Orange Led's for the push buttons

TECHNICAL DETAILS

Part. No.	Description	Voltage V	Outside Dimensions
30-6000	Control Unit 24 Volt for Electric Roofhatch	24*	96 x 49 x 28mm

* For 12 Volt application, use our 12V to 24V Converter (89-STEP12-24)